

Corinthian capitals from the Hellespontus



Abstract: The Hellespont area, owing to its key geographical location, played a dominant role in production, consumption, as well as trade contacts between the Black Sea and the Mediterranean during the Byzantine period. Despite the importance of this region, archaeological data from it is rather limited, hindering research on the history of the Hellespont in the Byzantine period. Archaeological surveys have been conducted in the valleys of the Hellespont catchment area in order to determine the location of Byzantine villages and to understand regional settlement patterns. An important group of objects identified as a result of this fieldwork were architectural members. The finds included numerous column capitals and fragments of liturgical furnishings. The present study examines Corinthian capitals, which constitute the most frequently occurring type of column capital, numbering 30 documented examples. All specimens were made from white or gray-veined white Prokonnesian marble. The general aims of research on this material are, firstly, to understand the nature of the now-lost buildings they came from, and, secondly, to contribute information on the location of settlements in the region. The specimens under consideration were identified during field surveys in Çanakkale, as well as during a query in the Çanakkale Archaeology Museum.

Keywords: Hellespontus, Çanakkale, Corinthian, column capital

Ayşe Çaylak Türker

Çanakkale Onsekiz Mart University

Polish Archaeology in the Mediterranean 32/1

Çaylak Türker 2023: 55–78

<https://doi.org/10.37343/uw.2083-537X.pam32.1.03>

Acknowledgments

The surveys in the valleys along the Hellespont were carried out with permission from the Directorate General for Cultural Assets and Museums. I thank the Directorate General for Cultural Assets and Museums for permission to conduct this research. I am also grateful to the Çanakkale Archaeology Museum (now the Çanakkale Museum of Troy) for allowing me to study the capitals housed therein.

INTRODUCTION

During the Byzantine period (AD 324–1453), the Black Sea and the Mediterranean were important areas of economic activity. The Hellespont, a natural maritime channel oriented northeast–southwest, was of profound importance for the producer – consumer relations between these areas. The administrative borders of the Hellespontus region encompassed the European coast (the Gallipoli Peninsula – Thracian Chersonese), the Europa region and the Anatolian coast (the Biga Peninsula) [Fig. 1].¹ The strait was of vital importance for the production, consumption and trade re-

lations in the Byzantine period thanks to the presence of economically relevant resources on its European and Asian coasts. Despite an abundance of historical data, the insufficient research on Byzantine settlements in the Hellespont and the progressing degradation of the archaeological record make the region difficult to understand. Relationships between the Black Sea and the Mediterranean on the one hand, and between the Marmara Sea and the Aegean on the other, escape thorough comprehension. To aid this situation, archaeological surveys of Byzantine settlements were



Fig. 1. Map of the Hellespont showing locations of sites mentioned in the paper (Basemap Mapbox, processing M. Momot)

- 1 These administrative districts, established by the emperor Diocletian (AD 285–305), retained their boundaries under Constantine (AD 306–337). The province of Hellespontus, established incorporating parts of ancient Mysia and Phrygia Minor, took its name from the Hellespont. A small portion of the strait at the Aegean mouth was within the boundaries of the province of Asia. Of the settlements in the studied area, Assos, Gargara and Argiza were episcopal centers of the province of Asia. Hellespont settlements established according to the rules of Byzantine urban planning were Gallipoli (Kallipolis) and Lampsakos in the upper section of the strait; Ilium was located in its lower part; Madytos, Coila (Coele), Abydos and Dardanos occupied the middle.

conducted in the valleys along the Hellespont (Türker 2012; 2014; 2015; 2016; 2018). As part of the survey works, queries were also carried out in the Çanakkale Archaeology Museum resulting in identification of some 1500 structural members in marble and other stones. Among these, a total of 154 column capitals belonging to eight different types were identified. They were mainly elements of Byzantine structures, churches as well as public buildings, which have not survived until the present day. In this study, the Corinthian capitals from the Hellespontus are examined, seeking to determine their place in Byzantine art. The general aims of research on this

material are, firstly, to understand the nature of the now-lost buildings they came from, and, secondly, to contribute information on the location of settlements in the region.

The catalog presents 30 capitals identified during the archaeological surveys and museum queries. All dimensions are given in centimeters; abbreviations: L – length, UL – upper length, BL – bottom length, T – thickness, UT – upper thickness, BT – bottom thickness, D – diameter, UD – upper diameter, BD – bottom diameter, H – height, (b) – broken. All photos used in the article are from the author's archive.

CATALOG OF THE CAPITALS

1. Çanakkale Archaeology Museum

[Fig. 2:a]

Inv. No. 2692

Gray-veined white marble

Dimensions and state of preservation: H 47, D 58; a part of the abacus and some parts of the faces of the capital are broken.

Description: The calathus features two rows of acanthus leaves. The lower one was cut during reuse and the capital was hollowed out, damaging the bottom part of the lower wreath of the calathus. The veins of the acanthus leaves are deeply carved. Eyelets indicating the use of a drill can be seen between the leaves. The helices and volutes emerge from the caulis bowl, which is chalice-shaped and carries a closed bunch of acanthus leaves. The bunches are damaged, as are the helices and volutes formed by plant stems emerging from between the leaves. The

abacus flower stem is present; the part that held the abacus flower is broken.

2. Ezine, Gökçebayır village [Fig. 2:b]

White marble

Dimensions and state of preservation: UL 42(b); UT 44(b); H 35(b); D 36(b); the lower section of the capital is embedded in concrete affixing it to the ground. The base annulet of the calathus and part of the lower row of leaves are, therefore, obscured. The corners of the abacus are broken.

Description: The calathus features two rows of acanthus leaves with eight leaves in each row. Each caulis emerging from the upper wreath carries a closed bunch of leaves. Plant stems springing from these bunches form helices with in-curved spirals. Plant stalks also extend towards the corners of the abacus, but the volutes are broken.

3. Biga, Bekirli village [Fig. 2:c]

White marble

Dimensions and state of preservation: UL 60(b); UT 64(b); H 56; D 42; since the lower section of the capital is embedded in concrete, the base annulet of the cala-

thus and part of the lower row of leaves are obscured. The corners of the abacus are broken.

Description: The calathus has two rows of acanthus leaves, with eight acanthus leaves in each row. The plant stems form-



Fig. 2. Corinthian column capitals: a – Cat. No. 1, Çanakkale Archaeology Museum; b – Cat. No. 2, Ezine, Gökçebayır village; c – Cat. No. 3, Biga, Bekirli village; and d – Cat. No. 4, Çanakkale Archaeology Museum (Photos A. Çaylak Türker)

ing the helices and volutes spring from the caulis bowl. The abacus flower is broken, but a trace of its stem is visible on the calathus.

4. Çanakkale Archaeology Museum

[Fig. 2:d]

White marble

Dimensions and state of preservation: UL 48(b); UT 45(b); H 18(b); the lower part of the calathus and the abacus are broken and incomplete. Fractures are visible on the abacus. An abacus flower may have been present, but the surface in this area is broken.

Description: The plant stems forming the volutes are visible on the caulis.

5. Çanakkale Archaeology Museum

[Fig. 3:a]

Inv. No. 2691

Gray-veined white marble

Dimensions and state of preservation: H 45; D 38; the abacus, helix and volute sections are broken.

Description: The calathus has two rows of acanthus leaves. Each row contains eight leaves. The acanthi tips are pointed; however, they do not belong to the type of acanthi with thorny or serrated leaves. Spaces between the leaves feature drop-shaped drill marks. The helices and volutes spring out from above the bunches of unfurling leaves emerging from the caulis bowl. The calathus lip is visible.

6. Ezine, Bozköy village [Fig. 3:b]

White marble

Dimensions and state of preservation: UL 58(b); UT 60(b); H 57(b); D 40(b); the base annulet of the calathus, the calathus,

and the abacus are broken, as are the sections containing the volutes.

Description: The calathus has two rows of acanthus leaves. Each row contains eight leaves. Each caulis emerging from within the upper wreath carries a closed bunch of leaves. Some of these bunches are carved in detail, while others are roughly shaped and left uncarved. Traces of plant stems forming the helices and volutes are visible on the caulis bowl. The calathus lip has a convex profile.

7. Çanakkale Archaeology Museum

[Fig. 3:c]

Inv. No. 5188, a specimen from the Biga-Çakırlı village
White marble

Dimensions and state of preservation: UL 47; UT 47; H 26; D 34; the lower section of the calathus was cut off. The abacus flowers are broken.

Description: The calathus has two rows of acanthus leaves, eight leaves in each row. The bunches of leaves opening in the form of chalices emerge from the upper wreath; however, the sections containing the caulis bowl are broken. The helices and plant branches extending towards the corners of the capital to form the volute are visible, but the volutes are broken. The calathus lip is visible under the abacus. The abacus flower stem is absent.

8. Çanakkale Archaeology Museum

[Fig. 3:d]

Inv. No. 3257

White marble

Dimensions and state of preservation: UL 30; UT 30; H 25(b); the capital is preserved in two broken fragments. A cor-

ner of the lower section of the calathus is missing.

Description: The calathus has two rows of wide acanthus leaves. Each row contains eight leaves, sparsely placed and splayed on the surface. The stems of the volutes do not emerge from the caulis bowl but from the areas between the leaves of the upper wreath.

Horn-shaped leaves, originating from volute stems, were rendered instead of helices.

9. Çanakkale, Kumkale village

[Fig. 4:a]

White marble

Dimensions and state of preservation: H 39(b); D 39(b); only a fourth part of the



Fig. 3. Corinthian column capitals: a – Cat. No. 5, Çanakkale Archaeology Museum; b – Cat. No. 6, Ezine, Bozköy village; c – Cat. No. 7, Çanakkale Archaeology Museum; and d – Cat. No. 8, Çanakkale Archaeology Museum (Photos A. Çaylak Türker)

capital has been preserved. The lower section of the calathus is broken and incomplete. Volute stems springing from the upper wreath are visible, but the sections containing the volutes are broken.
Description: Leaf motifs were used instead of helices.

10. Çanakkale, Çıplak village [Fig. 4:b]
 White marble

Dimensions and state of preservation: H 18(b); D 32; the lower section of the calathus has been preserved. The surface of the calathus is severely worn.

Description: The calathus has two rows



Fig. 4. Corinthian column capitals: a – Cat. No. 9, Çanakkale, Kumkale village; b – Cat. No. 10, Çanakkale, Çıplak village; c – Cat. No. 11, Biga, Danişment village; and d – Cat. No. 12, Ezine, Mehmet Yücel collection (Photos A. Çaylak Türker)

of acanthus leaves. Only the veins of the acanthi are visible, while the leaf sections are badly weathered.

11. Biga, Danişment village [Fig. 4:c]

White marble

Dimensions and state of preservation: H 15(b); the capital is broken; four of the

acanthi are visible on the lower wreath of the calathus.

Description: The wreath probably comprised eight acanthi. The surface is broken in the part containing the upper row of leaves and only the stem of one leaf is visible. The veins of the leaves were deeply carved.



Fig. 5. Corinthian column capitals: a – Cat. No. 13, Halileli village cemetery; b – Cat. No. 14, Çanakkale, Tevfikiye village; c – Cat. No. 15, Çanakkale Archaeology Museum, originally from Alexandria Troas; and d – Cat. No. 16, originally from Bayramiç, Aşağı Şapçılar village (Photos A. Çaylak Türker)

12. Ezine, Mehmet Yücel collection
[Fig. 4:d]

White marble

Dimensions and state of preservation: H 55; D 51; the lower section of the calathus and the abacus are broken. Damage to the faces renders the calathus details illegible.
Description: The available traces indicate that two wreaths were present on the calathus.

13. Halileli village cemetery [Fig. 5:a]

White marble

Dimensions and state of preservation: H 32; D 43.5; the abacus section is embedded in the ground. The base annulet of the calathus is broken.

Description: Two wreaths are visible on the calathus. The leaves were carved in high relief, with drop-shaped eyelets indicating the use of a drill present between the leaves.

14. Çanakkale, Tefikiye village [Fig. 5:b]

White marble

Dimensions and state of preservation: UL 43(b); UT 50; H 38; D 32; the tips of the volutes are broken.

Description: The calathus has three rows of acanthus leaves. Each row contains eight leaves. The tips of the acanthi are pointed, but they do not belong to the type of acanthi with thorny or serrated leaves. The spaces between the leaves bear drop-shaped drill marks. One stem springs from above the second row of leaves and then curves inward towards the middle section, coiling under the calathus lip to form a helix; the other stem extends outward in a spiral under the corner of the abacus, forming a volute.

15. Çanakkale Archaeology Museum
[Fig. 5:c]

Inv. No. 9392, a specimen from Alexandria Troas

White marble

Dimensions and state of preservation: UL 37; UT 37; H 20.5; D 27; the tips of the acanthi in the second and third wreaths are broken. The plant stems forming the corner helices and volutes, as well as the corners containing the volutes are not preserved.

Description: The leaves are thin and long, and their veins are carved fairly superficially. The tips of the acanthus leaves are pointed. Drop-shaped drill marks are visible between the lobes. The calathus lip has a convex profile.

16. Çanakkale Archaeology Museum
[Fig. 5:d]

Inv. No. 5152, a specimen from Bayramiç, Aşağı Şapçılar village

White marble

Dimensions and state of preservation: H 24(b); D 29(b); the upper section of the calathus is broken.

Description: The calathus has two rows of acanthus leaves, with eight leaves in each row. Their tips bear drop-shaped drill marks.

17. Çanakkale Archaeology Museum
[Fig. 6:a]

Inv. No. 377, a specimen from Troy
Gray-veined white marble

Dimensions and state of preservation: UL 34.5; UT 34.5; H 34; D 24.5; the annulet of the calathus is broken.

Description: Three faces of the capital were carved and one was left rough. Contours of the acanthus leaves and volute were outlined on the uncarved

face and its surface was retouched, but the veins of the leaves and other details were not rendered. The caulis bowl was left without retouching. The calathus has two rows of acanthus leaves with eight leaves each. There are superficial fractures on the lower wreath. Of the acanthi on the upper wreath, those at the corners extend as far as the area under the volute and their tips are formed to merge with it. The leaves were sparsely placed; the wide acanthus leaves are splayed on the surface. The stems of the

volute do not emerge from the caulis bowl but from the spaces between the leaves of the upper wreath. Horn-shaped leaves springing from volute stems were rendered instead of helices. The abacus flower stem was not carved; a trace of the abacus flower remains, but its surface is damaged.

18. Çanakkale Archaeology Museum

[Fig. 6:b]

Inv. No. 4

Gray-veined white marble



Fig. 6. Corinthian column capitals: a – Cat. No. 17, originally from Troy; b – Cat. No. 18; c – Cat. No. 19 (all from Çanakkale Archaeology Museum); and d – Cat. No. 20, Ezine, Alemsah village (Photos A. Çaylak Türker)

Dimensions and state of preservation: UL 44; UT 44; H 40; D 40; the base annulet of the calathus is broken.

Description: Four large acanthus leaves are placed at the corners of the calathus. The external helices, located between the acanthi, emerge from the base annulet of the calathus and extend to form the volutes at the corners. Within the area bordered by these helices is the abacus flower stem. It has the form of a branch with leaves. The abacus flower protrudes from the surface but was not carved in detail.

19. Çanakkale Archaeology Museum
[Fig. 6:c]

White marble

Dimensions and state of preservation: UL 45; UT 45; H 20(b); the lower section of the calathus is broken and incomplete.

Description: The upper parts of four large acanthus leaves are visible on the calathus. The leaves extend as far as the abacus. The volutes are missing. The roughly carved abacus flower extends towards the calathus.

20. Ezine, Alemşah village [Fig. 6:d]

White marble

Dimensions and state of preservation: UL 35(b); UT 34(b); H 25(b); the lower section of the calathus is broken.

Description: From the preserved fragment it is apparent that four large acanthus leaves covered the calathus. The leaves were carved in low relief and rather simply executed. The upper parts of the leaves curve slightly outwards at the corners of the abacus. The abacus flower is present.

21. Yakup Bey Inn, Çardak village
[Fig. 7:a]

White marble

Dimensions and state of preservation: UL 45(b); UT 45(b); H 20(b); D 42(b); the base annulet of the calathus and the abacus section of the capital are broken; the item was reused as a column base inside the Yakup Bey Inn in Çardak.

Description: From the preserved fragment it is apparent that eight large acanthus leaves covered the calathus.

22. Çanakkale, Dümrek village [Fig. 7:b]

White marble

Dimensions and state of preservation: H 25(b); D 40(b); a fragment of the lower section of the calathus is preserved.

Description: Fragments of two large acanthus leaves are present on the calathus.

23. Çanakkale, Dümrek village [Fig. 7:c]

White marble

Dimensions and state of preservation: H 21(b); D 45(b); a fragment of the calathus is preserved.

Description: Fragments of two large acanthus leaves are present on the calathus.

24. Çanakkale, Dümrek village [Fig. 7:d]

White marble

Dimensions and state of preservation: H 22(b); a fragment of the calathus is preserved.

Description: Fragments of two large acanthus leaves are present on the calathus.

25. Çanakkale Archaeology Museum
[Fig. 8:a]

White marble

Dimensions and state of preservation: UL 25(b); UT 23(b); H 37; D 22. The base annulet of the calathus is broken.

Description: Three faces of the capital were carved, while the fourth one was left unadorned. The fourth face bears an inscription indicating that the capital may be a re-carved older fragment. The four large acanthus leaves placed at the corners of the calathus cover its surface. The leaves have pointed tips, and their veins were carved superficially. The acanthi extend as far as the area below the abacus. There are no volutes at the corners, and the tips of the acanthi, curving upwards, replace the volutes. Despite the absence of volutes, bands representing their stems emerge from the space between the acanthi. The

abacus flower stem is inverted and located between the helices, which spring from between the bands of volute stems and curve inwards.

26. Biga, Çeşmealtı village [Fig. 8:b]

White marble

Dimensions and state of preservation: UL 51(b); UT 50(b); H 26(b); D 44(b); the lower section of the calathus is broken and missing.

Description: The preserved fragment indicates that four large acanthus leaves were present on the calathus. Each leaf covered a corner of the calathus and ex-



Fig. 7. Corinthian column capitals: a – Cat. No. 21, Yakup Bey Inn, Çardak village; b – Cat. No. 22, Çanakkale, Dümrek village; c – Cat. No. 23, Çanakkale, Dümrek village; and d – Cat. No. 24, Çanakkale, Dümrek village (Photos A. Çaylak Türker)

tended as far as the abacus. The volutes are missing, but the extant volute stems emerge from the spaces between the acanthi. These spaces are V-shaped and filled with a stylized plant motif.

27. Yakup Bey Inn, Çardak village

[Fig. 8:c]

White marble

Dimensions and state of preservation: UL 46; UT 46; H 50; D 42; the out-curved tips of the acanthi, extending as far as the area under the abacus, are broken.

Description: The calathus has two rows of acanthus leaves. The lower wreath contains five acanthi, and the upper one has four. The leaves are large and have pointed tips. The acanthi in the upper row cover the corners of the calathus. There are no volutes at the corners of the calathus, but the volute stems are visible emerging from the spaces between the acanthi. These spaces are V-shaped and decorated with a stylized plant motif that merges with the abacus flower.



Fig. 8. Corinthian column capitals: a – Cat. No. 25, Çanakkale Archaeology Museum; b – Cat. No. 26, Biga, Çeşmealtı village; c – Cat. No. 27, Yakup Bey Inn, Çardak village; and d – Cat. No. 28, Biga, Gümüşçay village (Photos A. Çaylak Türker)

28. Biga, Gümüşçay village [Fig. 8:d]

Gray-veined white marble

Dimensions and state of preservation: UL 52(b); UT 54(b); H 47; D 38; the out-curved tips of acanthi, which extended as far as the area under the abacus, are broken.

Description: The capital lies in front of the Gümüşçay hunting club. The calathus has two rows of acanthus leaves, with four leaves each. The leaves are large and splayed on the surface of the calathus. The acanthi in the upper row cover the corners of the calathus. There are no volutes at the corners of the calathus, but volute stems emerge from the spaces between the acanthi. The volute stems are “V-shaped” and the space between them is decorated with a stylized plant motif that merges with the abacus flower.

29. Çanakkale Archaeology Museum

[Fig. 9:a]

Gray-veined white marble

Dimensions and state of preservation: H 28; D 26.5; the base annulet of the calathus, the volutes and the abacus are broken.

Description: The calathus has two rows of acanthus leaves. The acanthi are quite large and sparsely placed. The leaves represent the type of acanthi with fine serrations. Traces of a helix are visible in the preserved part of the caulis.

30. Çanakkale, Karacaören village

[Fig. 9:b]

White marble

Dimensions and state of preservation: H 28(b); D 40(b); broken abacus and calathus, including the lower section and edge of the calathus. The sections containing the volutes are broken.

Description: The capital probably had two rows of acanthus leaves. The sparsely placed acanthi covered the volute corners. Palmettes were executed in low relief on the caulis bowl.

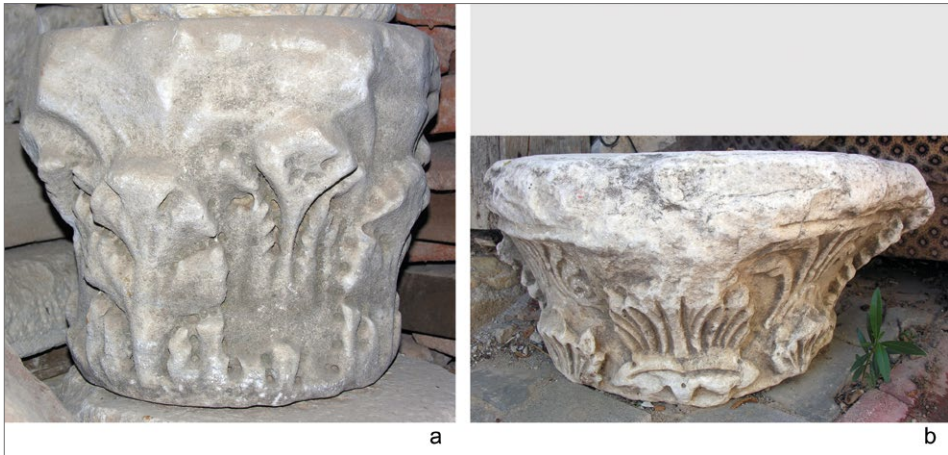


Fig. 9. Corinthian column capitals: a – Cat. No. 29, Çanakkale Archaeology Museum; and b – Cat. No. 30, Çanakkale, Karacaören village (Photos A. Çaylak Türker)

STYLISTIC FEATURES AND DATING OF THE CAPITALS

During the survey work in the Hellespontus, 30 examples of Corinthian column capitals were documented. All the capitals discussed are made from white or gray-veined white Prokonnesian marble. Prokonnesos, modern-day Marmara Adası, is situated in the eastern part of the Propontis (Marmara Sea). Gray-veined white marble is available throughout the island. Prokonnesian marble was in high demand in Roman times, especially for the manufacture of high-quality sarcophagi (Asgari 1978). Although the quarrying seems to have come to a halt at the end of the Roman period, the quarries, and the marble trade itself, regained importance after the foundation of Constantinople. From the 4th to the 6th century, a large number of marble capitals were shipped from Prokonnesos.² The export of finished products played a vital role in the spread of the new Prokonnesian style and sculptural repertoire typical for the 5th and 6th centuries. The Prokonnesian items were distributed throughout the Mediterranean via the Hellespont and around the Black Sea region via the Bosphoros (Sodini, Barsanti, and Guiglia Guidobaldi 1998; Barsanti and Paribeni 2018).

One of the capitals documented in the Hellespontus was left unfinished.³ The specimen is housed in the Çanak-kale Archaeology Museum and origi-

nates from the ruins of Troy (Cat. No. 17). Three faces of this capital were carved and one was left rough. The contours of acanthus leaves and volute were outlined on the uncarved face, and its surface was retouched, but the veins of the leaves and other details were omitted. The caulis bowl was left without retouching.

In specimens with Cat. Nos 1–3, the calathus is encircled by two rows of acanthus leaves with the acanthi of the lower and upper wreaths intertwined. The stems of the acanthi in the upper row extend into the spaces between the leaves of the lower row. The leaf veins are deeply carved. The tips of the leaves are pointed, with drop-shaped eyelets in between. The helices and volutes emerge from a chalice-shaped caulis bowl that carries a closed bunch of leaves. The helices extending from within the bunch curve inwards. The volutes are broken. The sections containing the abacus flower are also damaged, but the abacus flower stem is intact. In Cat. No. 13, where only the lower section of the calathus has been preserved, the style of the acanthi in the lower wreath is akin to that of the above-mentioned examples. The stylistic features of these specimens find parallels in capitals dated to the mid-2nd century (Heilmeyer 1970: 88, Pl. 26.1; İdil 1976: 15, Pl. 8.2; Başaran 1997: 7, Fig. 3).

2 For archaeological evidence in the form of two shipwrecks see Beykan 1988 (Roman shipwreck on the Black Sea coast of Turkey near Şile) and Kapitän 1969 (6th-century shipwreck off the east coast of Sicily near Maczamemi). In addition, see Pensabene 1986: 287; Asgari 1988.

3 The phases of shaping the Corinthian-type capitals were also documented during research in the quarries at Prokonnesos, see Asgari 1978. In addition, for schematically rendered capitals, see Herrmann 1973; Pensabene 1986: 288, 290, 324–333, 387–394; Guiglia Guidobaldi 1990.

On capitals with Cat. Nos 5–7, the acanthi are placed more sparsely. The leaves of the lower and upper wreaths are intertwined. They have deeply carved veins and pointed tips with drop-shaped eyelets in between. The helices and volutes sprout above the bunch of unfurling leaves emerging from within the caulis bowl. The abacus flower stem is not visible, and the abacus flower is broken. The capitals resemble those dated to the second half of the 2nd century (Heilmeyer 1970: 88; İdil 1976: 15; Başaran 1997: 7).

On the capitals with Cat. Nos 14 and 15, three rows of acanthus leaves are present. The acanthi are wider and the lines indicating the leaf veins are more superficial. Drop-shaped eyelets are discernible between the leaves. The helices and volutes do not spring from the caulis bowl but from the upper row of leaves. The abacus flower stem is not visible. The capital with Cat. No. 16 preserves only the lower section of the calathus, but the style of the leaves resembles that of capitals with Cat. Nos 14 and 15. The stylistic features of these capitals point to a 3rd-century date (Pensabene 1986: Fig. 3; Başaran 1997), making it highly likely that they were pieces from the Roman Imperial period reused in Byzantine buildings (Greenhalgh 2009: 11–12).⁴ The reuse of earlier architectural members was common in the early Byzantine period, as many ancient buildings had lost their original functions. Indeed, in a number of cities densely filled with ancient buildings, reuse was the rule, and newly carved elements were rare (Green-

halgh 2009: 5; Niewöhner 2021: 10, 32). The ancient buildings, used in turn as sources of readily accessible building material for new structures, rapidly disappeared (Hasluck 1910: 10; Vatin 2000: 314, 334; Greenhalgh 2009: 467–468).

In the capital with Cat. No. 17, two rows of acanthus leaves adorn the calathus. The sparsely placed acanthi are wide and splayed on the surface. The volutes do not emerge from the caulis bowl but from the spaces between the leaves of the upper wreath. Horn-shaped leaves springing from the volute stems were carved instead of helices, and the abacus flower stem is lacking. The use of leaves instead of helices was first recorded in the late 2nd century (Başaran 1997: 12–13), and the omission of the abacus stem became a standard in Corinthian capitals under the Severi (AD 193–235) (Başaran 1997: 19). The acanthus leaves used on the calathus belong to a type occurring under Theodosius (AD 379–395) (Kautzsch 1936: 52–53). However, the capital is not as large as the Theodosian specimens and should rather be placed among the examples from the 5th century. At that time, the import of Corinthian capitals to Rome decreased compared to the previous period. Given the limited number of examples in Rome, the Corinthian capitals from Ravenna are worthy of note (Pensabene 1986: 291).

Four large acanthus leaves placed over the corners of the calathus of the capital with Cat. No. 18 are carved in low relief. They differ from the natural-looking, full acanthus leaves plastically rendered on the capitals described above. The leaves

4 For the reuse of columns and capitals in Late Antique churches, see Deichmann 1975: 14, 19, 92–93; Brenk 1996; Peschlow 2004: 115–118; Pensabene 2015.

in this specimen are splayed flat against the surface of the calathus, covering its surface. The leaf veins are schematically carved. The tips of the leaves are pointed, and the spaces between them form wide, oval fields. The volute stems extend as far as the base annulet of the calathus. At the corners, the tips of the acanthus leaves merge with the volutes. The abacus flower stem springs from between the volute stems and is connected with the abacus flower. The flower, not carved in detail, is large and protrudes outward. In this capital, the elements defining the Corinthian capital type clearly dissolved and the modeling lost its plasticity. Two parallels to this piece are found at Basilica A of Nea Anchialos in Greece and in Salona in modern-day Croatia (Kautzsch 1936: 80). The Greek specimen is dated to the second half of the 5th century, and capitals of this kind are thought to have been executed around AD 500 (Kautzsch 1936: 79–80, Pl. 17.240).

The specimen with Cat. No. 25 also features four large acanthus leaves placed at the corners of the calathus. The leaves are wide and splayed on the calathus surface. The leaf veins are schematically carved. Nevertheless, its characteristic features are geometric clefts executed by carving deeply from the bottom in places where adjacent leaves touch each other. Such a way of carving the leaves was particularly common in Corinthian capitals of Constantinople in the first half of the 5th century, but also throughout the 6th century. This leaf type, along with the acanthus leaves that were represented fully and plastically rendered, was replaced with leaves that used the shadow-and-light effect and constituted more sche-

matic ornamental motifs (Betsch 1977: 185–195, 207). Such a manner of carving resulted in strong contrasts between the lit surfaces and the background shadows, better suited for the dim lighting of church interiors (Niewöhner 2021: 39). The leaves extend as far as the area under the abacus. Volute stems at the corners are absent, replaced by an out-curved tip of a leaf. Several bands resembling volute stems emerge from between the leaves. The abacus flower stem in the form of an upside-down palmette (*fleur-de-lis*) is placed between the in-curved helices emerging from these bands.

The capital with Cat. No. 26 is broken in its lower part. The four large acanthus leaves placed at the corners of the calathus are similar in style to Cat. No. 25. There are no volutes at the corners of this capital. Instead, the corner acanthus leaves extend as far as the area under the abacus. Although the volutes are missing, their stems are visible emerging from between the acanthi, which renders this specimen similar to Cat. No. 25. However, the section from which the volute stems emerge is decorated with a palmette motif, which does not reach the abacus flower. This type is akin to the “lyre-type” capitals widely used throughout the 5th century (Kautzsch 1936: 19; Betsch 1977: 208; Barsanti 1989: esp. 125).

Although no volutes were identified on the capital with Cat. No. 27, volute stems merging with the upper wreath were present. The area at the merge of the volute stems was left unadorned. The specimen resembles the capital with the “V-shaped” or “lyre-shaped” motif found in front of the Gümüşçay hunting club (Cat. No. 28) (Kautzsch 1936: 17–22). The

“lyre-type” capitals, medium in size, were produced in large numbers. Made mainly from Prokonnesian marble, during the 5th and 6th centuries they were traded into the provinces and used to decorate smaller basilicas, like the one at Ravenna, as well as colonnaded streets, e.g. at Miletos in Karia (Kautzsch 1936: 59–61; Niewöhner 2021: 40).

The capital with Cat. No. 28 features a calathus with two rows of acanthus leaves, exhibiting five acanthi in the lower wreath and four in the upper. The four acanthi of the upper wreath cover the corners of the calathus and extend as far as the abacus. No volutes are present at the calathus corners, but “V shaped” volute stems with a stylized plant motif are found in between the acanthi. This motif merges with the abacus flower. Several different types of the motif created by the volute stems were dis-

tinguished by Kautzsch according to whether this form curved in a sharper or rounder form. Type 5 was described as “V-shaped”, while Type 6 was referred to as “lyre-shaped”. Notably, Betsch (1977: 217) and Barsanti (1989: 125) considered this detail insufficient for distinguishing two different types and preferred to view these two groups as a single type. For the dating of these capitals, Kautzsch (1936: 17) indicated the period from the late 5th century to AD 530. However, Betsch (1977: 218, note 397) pointed out that the only reliably dated examples of these capitals were the specimens from the basilica of Sant’Apollinare Nuovo in Ravenna and dated them to AD 495–500. Parallels are also found in the Turan Beler collection (Peschow, Peschow-Bindokat, and Wörrle 2002: 476–477, Pl. 17a), and they should be dated to the 5th–6th centuries.

PROVENANCE

Ten of the Corinthian column capitals documented and discussed here come from the collection of the Çanakkale Archaeological Museum. One of them was found in Troy (Cat. No. 17). Eight were recorded in settlements of central Çanakkale. Seven of these were found in the villages of Kumkale (Cat. No. 9), Çıplak (Cat. No. 10), Halileli (Cat. No. 13), Tevfikiye (Cat. No. 14) and Dümrek (Cat. Nos 22–24). These capitals may have been used in buildings located within the boundaries of the Ilion bishopric [see *Fig. 1*]. Ilion/Troy, located in the northwestern corner of the ridge to the south of the Dümrek tributary, was identified

as Hisarcık by Gouffier and Spratt, but as Hisarlık by Hammer and Turner. In addition, its name was mentioned as Kalafat or Kalafatlı in the late 18th century. However, some travelers who arrived in the region around 1800 identified Troy with a settlement close to the Çıplak village. Today, the village closest to the site is Tevfikiye, located about 300 m to the northeast of Troy. Ilion, an episcopal center from the mid-4th century onward, is localized at Hisarlık. Excavations on the site revealed a church from the early Byzantine period and Roman houses in the lower *polis* that were apparently restored and used in the Byzantine period

(Rose 2001: 280–281). The majority of the uncovered Byzantine-period coins are dated to AD 395, followed by groups of coins dated to the first half of the 5th century and to AD 457–518. Notably, the catalogue by Bellinger (1961) shows that the unearthed coins of Justinian constituted a much smaller group.

The eighth capital from central Çanakkale was documented in the village of Karacaören (Cat. No. 30), founded on the ancient settlement site of Abydos [see Fig. 1]. From the 5th century onward, Abydos was one of the bishoprics affiliated to Kyzikos, as indicated by the presence of Archbishop Hermias of Abydos at the Council of Kyzikos. Isidoros, a bishop of Abydos, was mentioned at the 6th ecumenical council that met in Constantinople in AD 680/81, whereas the names of Ioannes and Melissenos of the bishopric of Abydos are found in records dated to AD 691/92 (Angold 1995: 146; Lilie et al. 2000: 209). A seal belonging to Theodosios, a bishop and priest of Abydos, confirms that the settlement was a bishopric (Nesbitt and Oikonomides 1996: 87, Cat. No. 40.38). Abydos became a metropolis in AD 1084 (Darrouzès 1981: 123), as indicated by finds from the city, including seals of Michael and John Proedros, its metropolitans (Zacos 1984: No. 587; Nesbitt and Oikonomides 1991: 87, Cat. No. 40.37). The names of metropolitans of Abydos are mentioned in written documents until the 12th century (Oikonomides 1991). The piece from Karacaören, as well as at least a few of the capitals documented in the Çanakkale Archaeological Museum probably came from buildings of the episcopal see of Abydos.

Four capitals (Cat. Nos 2, 6, 12, and 20) were recorded in the villages of the Ezine district. Importantly, this area was once the location of the bishopric of Skamandros. Researchers focusing on Classical Greek cultures identified ancient Skamandros with the site of Adatepe in Akköy on the middle Scamander (Robert 1966: 102; Cook 1973: 355; Frisch 1975: 150; Schulz 2000: 26). Akköy is a village settlement affiliated to the town of Ezine in Çanakkale, located approximately 5 km from Ezine and around 3.5–4 km to the southeast of the Çanakkale – İzmir highway bridge over the Scamander. It lies on a low ridge on the southern side of a narrow valley along the Subaşı brook, which feeds into the Scamander.

Numerous examples of Byzantine architectural sculpture have been recorded at the village square and in the cemetery area in Akköy (Türker 2009). According to the majority of the oral testimonies collected in the village, the pieces originated from Adatepe, and Byzantine-period finds identified in Adatepe support these statements.

John M. Cook (1973: 277) also suggested that the items found in Akköy had been brought from Adatepe, located to the north of the village. Relying on pottery of the Late Roman period observed in Adatepe during his visit to the region in 1959 and 1968, he concluded that the site had been an important Byzantine settlement. From the people he had spoken to, he learned that stone for construction projects in Ezine had been supplied from this region. Having assumed that an inscription, found in Ezine and read by Bean, may have also been brought from this region, Cook related St. Tryphon, men-

tioned in the text, to a possible church in Adatepe (Türker 2018: 28). Based on this data, he localized the bishopric of Skamandros at Adatepe. Cook's suggestion was accepted by many scholars (Robert 1966: 102; Frisch 1975: 150; Schulz 2000: 26). However, Akarca (1978: 26) and Mannucci (1997: 283–284), who conducted research in the region, suggested that Skamandros was located between Akçaalan and Akköy instead of at Adatepe.

An inscription containing the word “Skamandros” was identified on a marble block found in the field, about 750 m to the southwest of the Akköy–Kaleyeri locality (Türker 2016: Fig. 7). This inscription, together with other archaeological data obtained, indicates that the bishopric of Skamandros might have been located on the slopes extending for about 2.5 km southwest from Adatepe, as far as the bank of the Scamander, in an area that also encompassed the Kaleyeri locality.

Five of the capitals (Cat. Nos 3, 7, 11, 26, and 28) were found in settlements in Biga, the ancient city of Parion [see Fig. 1]. Located in the modern-day village of Kemer within the borders of the Biga district, Parion was founded as a Greek colony at the end of the 8th century BC and boasted the status of a *colonia* during the Roman period. During the Byzantine period, not only did it keep its importance, but it also gained the rank of an episcopal see. The city subsequently became an archbishopric in AD 640 and maintained this status until the end of the 13th century AD (Oyarçin 2020: 619).

In conclusion, the capitals that are the subject of this study have stylistic characteristics similar to those produced in the Prokonnesos workshops. According to preliminary studies, they were used in buildings in Ilion, Skamandros, Abydos and Parion, the episcopal centers of the Hellespontus region.

Prof. Dr. Ayşe Çaylak Türker

<https://orcid.org/0000-0002-8030-2273>
Çanakkale Onsekiz Mart University
ayseturker@comu.edu.tr

How to cite this article: Çaylak Türker, A. (2023). Corinthian capitals from the Hellespontus. In M. Gwiazda, A. Poggio, and D. Wielgosz-Rondolino (eds), *Marble in the Early Byzantine Eastern Mediterranean: Use, Aesthetics, and Social Significance (=Polish Archaeology in the Mediterranean, 32/1)* (pp. 55–78). Warsaw: WUW. <https://doi.org/10.37343/uw.2083-537X.pam32.1.03>

References

- Akarca, A. (1978). Troas'ta Aşağı Kara Menderes Ovası Çevresindeki Şehirler. *Belleten*, 42(165), 1–52
- Angold, M. (1995). *Church and society in Byzantium under the Comneni, 1081–1261*. Cambridge: Cambridge University Press

- Asgari, N. (1978). Roman and Early Byzantine marble quarries of Proconnesus. In E. Akurgal (ed.), *The proceedings of the Xth International Congress of Classical Archaeology, Ankara–Izmir 23.–30.IX.1973*, I (pp. 467–480). Ankara: Türk Tarih Kurumu
- Asgari, N. (1988). The stages of workmanship of the Corinthian capital in Proconnesus and its export form. In N. Herz and M. Waelkens (eds), *Classical marble: Geochemistry, technology, trade* (pp. 115–125). Dordrecht: Kluwer Academic
- Barsanti, C. (1989). L'esportazione di marmi dal Proconneso nelle regioni pontiche durante il IV–VI secolo. *Rivista dell'Istituto nazionale d'archeologia e storia dell'arte*, 12, 91–220
- Barsanti, C. and Paribeni, A. (2018). La scultura in funzione architettonica a Costantinopoli tra V e VI secolo: aspetti tecnici, tipologici e stilistici. *Acta ad Archaeologiam et Artium Historiam Pertinentia*, 30(16), 23–72
- Başaran, C. (1997). Kyzikos Korinth Başlıkları. *Türk Arkeoloji Dergisi*, 51, 1–52
- Bellinger, A.R. (1961). *Troy: The coins*. Princeton, NJ: Princeton University Press
- Betsch, W.E. (1977). *The history, production and distribution of the late antique capital in Constantinople* (Ph.D. diss.). University of Pennsylvania
- Beykan, M. (1988). The marble architectural elements in export-form from the Şile shipwreck. In N. Herz and M. Waelkens (eds), *Classical marble: Geochemistry, technology, trade* (pp. 127–137). Dordrecht: Kluwer Academic
- Brenk, B. (1996). Spolien und ihre Wirkung auf die Ästhetik der *varietas*: zum Problem alternierender Kapitelltypen. In J. Poeschke and H. Brandenburg (eds), *Antike Spolien in der Architektur des Mittelalters und der Renaissance* (pp. 49–92). Munich: Hirmer
- Cook, J.M. (1973). *The Troad: An archaeological and topographical study*. Oxford: Clarendon Press
- Darrouzès, J. (1981). *Notitiae episcopatum Ecclesiae Constantinopolitanae*. Paris: Institut français d'études byzantines
- Deichmann, F.W. (1975). *Die Spolien in der spätantiken Architektur*. Munich: Verlag der Bayerischen Akademie der Wissenschaften
- Frisch, P. (1975). *Die Inschriften von Ilion*. Bonn: Habelt
- Greenhalgh, M. (2009). *Marble past, monumental present: Building with antiquities in the mediaeval Mediterranean*. Leiden–Boston: Brill
- Guiglia Guidobaldi, A. (1990). I capitelli della basilica giustiniana della Theotokos, oggi die S. Caterina, sul Monte Sinai. In F. De Maffei, C. Barsanti, and A. Guiglia Guidobaldi (eds), *Costantinopoli e l'arte delle province orientali (=Milion 2)* (pp. 265–342). Rome: Edizioni Rari Nantes
- Hasluck, F.W. (1910). *Cyzicus: Being some account of the history and antiquities of that city, and of the district adjacent to it, with the towns of Apollonia ad Rhyndacum, Miletupolis, Hadrianutherae, Priapus, Zeleia, etc.* Cambridge: Cambridge University Press
- Heilmeyer, W.D. (1970). *Korinthische Normalkapitelle: Studien zur Geschichte der römischen Architekturdekoration*. Heidelberg: F.H. Kerle

- Herrmann, J. (1973). *The schematic composite capital: A study of architectural decoration at Rome in the later Empire* (Ph.D. diss.). New York University
- İdil, V. (1976). Anadolu'da Roma İmparatorluk Çağı Korinth Başlıkları. *Anadolu (Anatolia)*, 20, 1–49
- Kapitän, G. (1969). The church wreck of Marzamemi. *Archaeology*, 22(2), 122–133
- Kautzsch, R. (1936). *Kapitellstudien: Beiträge zu einer Geschichte des spätantiken Kapitells im Osten vom vierten bis ins siebente Jahrhundert*. Berlin: De Gruyter
- Lilie, R.-J. et al. (eds). (2000). *Prosopographie der mittelbyzantinischen Zeit I.2. Georgios (#2183)–Leon (#4270)*. Berlin: De Gruyter
- Mannucci, F. (1997). Alla ricerca di Scamandria. *Numismatica e Antichità Classiche*, 26, 277–286
- Nesbitt, J.W. and Oikonomides, N. (1991). *Catalogue of Byzantine seals at Dumbarton Oaks and in the Fogg Museum of Art I. Italy, north of the Balkans, north of the Black Sea*. Washington, DC: Dumbarton Oaks Research Library and Collection
- Nesbitt, J.W. and Oikonomides, N. (1996). *Catalogue of Byzantine seals at Dumbarton Oaks and in the Fogg Museum of Art III. West, northwest, and central Asia Minor and the Orient*. Washington, DC: Dumbarton Oaks Research Library and Collection
- Niewöhner, P. (2021). *Byzantine ornaments in stone: Architectural sculpture and liturgical furnishings*. Berlin–Boston: De Gruyter
- Oikonomides, N. (1991). Le kommerkion d'Abydos: Thessalonique et le commerce bulgare au IX^e siècle. In V. Kravari, J. Lefort, and C. Morrisson (eds), *Hommes et richesses dans l'Empire byzantin II. VIII^e–XV^e siècle (=Réalités byzantines 3)* (pp. 241–248). Paris: P. Lethielleux
- Oyarçın, K. (2020). The Early Byzantine period of Parion in light of numismatic data. In V. Keleş (ed.), *Propontis ve çevre kültürleri = Propontis and surrounding cultures (=Parion Studies 3)* (pp. 619–628). Istanbul: Ege Yayınları
- Pensabene, P. (1986). La decorazione architettonica, l'impiego del marmo e l'importazione di manufatti orientali a Roma, in Italia e in Africa (II–VI d. C.). In A. Giardina (ed.), *Società romana e impero tardoantico III. Le merci gli insediamenti* (pp. 285–429). Rome: Laterza
- Pensabene, P. (2015). *Roma su Roma: reimpiego architettonico, recupero dell'antico e trasformazioni urbane tra il III e il XIII secolo (=Monumenti di Antichità Cristiana 22)*. Vatican City: Pontificio Istituto di archeologia cristiana
- Peschlow, U. (2004). Kapitell. In *Reallexikon für Antike und Christentum XX* (cols 57–123). Stuttgart: Hiersemann
- Peschlow, U., Peschlow-Bindokat, A., and Wörrle, M. (2002). Die Sammlung Turan Beler in Kumbaba bei Şile (II) Antike und byzantinische Denkmäler von der bithynischen Schwarzmeerküste. *Istanbuler Mitteilungen*, 52, 429–522
- Robert, L. (1966). *Monnaies antiques en Troade*. Geneva–Paris: Droz; Minard
- Rose, B. (2001). Von Konstantin bis Mehmet II. Ilion in byzantinischer Zeit. In J. Latacz et al. (eds), *Traum und Wirklichkeit Troia* (pp. 280–288). Stuttgart: Konrad Theiss Verlag GmbH

- Schulz, A. (2000). *Die Stadtmauern von Neandrea in der Troas (=Asia Minor Studien 38)*. Bonn: Habelt
- Sodini, J.-P., Barsanti, C., and Guiglia Guidobaldi, A. (1998). La sculpture architecturale en marbre au VI^e siècle à Constantinople et dans les régions sous influence constantinopolitaine. In N. Cambi and E. Marin (eds), *Acta XIII Congressus Internationalis Archaeologiae Christianae* (pp. 301–376). Vatican City–Split: Pontificio Istituto di Archeologia Cristiana; Arheološki muzej
- Türker, A.Ç. (2009). Byzantine architectural sculpture from Akköy on the middle Scamander Valley in Hellespontus. *Edebiyat Fakültesi Dergisi*, 26(1), 201–218
- Türker, A.Ç. (2012). Archaeological survey of early Christian–Byzantine period on the valleys that reached the Hellespont: 2010 research. In 29. *Arastirma sonuçlari toplantisi I* (pp. 401–428). Ankara: Kültür ve Turizm Bakanlagi
- Türker, A.Ç. (2014). An archaeological survey of early Christian–Byzantine period on the valleys that reached the Hellespont: 2012 research. In 31. *Arastirma sonuçlari toplantisi I* (pp. 186–206). Ankara: Kültür ve Turizm Bakanlagi
- Türker, A.Ç. (2015). An archaeological survey of early Christian–Byzantine period on the valleys that reached the Hellespont: 2013 research. In 32. *Arastirma sonuçlari toplantisi II* (pp. 189–208). Ankara: Kültür ve Turizm Bakanlagi
- Türker, A.Ç. (2016). An archaeological survey of the early Christian–Byzantine period on the valleys that reached the Hellespont: 2014 research. In 33. *Arastirma sonuçlari toplantisi I* (pp. 301–324). Ankara: Kültür ve Turizm Bakanlagi
- Türker, A.Ç. (2018). *Byzantine architectural sculpture in Çanakkale*. Ankara: Bilgin Kültür Sanat Yayınları
- Vatin, N. (2000). Notes sur l'exploitation du marbre et l'île de Marmara Adasi (Proconnèse) à l'époque ottomane. *Turcica*, 32, 307–362
- Zacos, G. (1984). *Byzantine lead seals II* (J.W. Nesbitt, ed.). Berne: Benteli